

Advanced Reservation Rate Schedule — 2010

Toll Free: (800) 462-9703
or (609) 368-5121
Fax (609) 368-3888

www.avalon-beachcomber.com
email: beachcomberresort@comcast.net

Opening Date — May 7, 2010

- Rates quoted for four. Add \$10 per day for each additional person over 6 years old
- Cribs available at \$5.00 each per day
- Connecting units available
- Weekend rates: \$10 additional per night for weekend stays of less than 4 nights
- Rates apply to advance reservations only and are subject to availability
- Check-in 3:00 p.m.; Check-out 11:00 a.m.
- One parking space allotted per unit
- Sorry, no pets



EFFICIENCY	ONE-BEDROOM SUITES	TWO BEDROOM		THREE ROOM SUITES
B1 & B2 Sleeps 4	C - D Sleeps 4 - 6	F Sleeps 6+	G2, H2 Sleeps 6+	G1, H1 Sleeps 6+
\$95	\$145	\$170	\$180	\$180
\$115	\$165	\$205	\$220	\$220
\$185	\$240	\$300	\$320	\$320
SUN-SATIONAL SUPER-SAVER SPECIALS				
\$300	\$480	\$540	\$565	\$565
*OFF-SEASON MIDWEEK Rates Above Apply to 4 Night Stay Only. (Mon.-Thurs.) Includes 4 nights lodging.				
\$170	\$240	\$310	\$325	\$325
**OFF-SEASON ESCAPE WEEKEND Rates above include 2 nights lodging.				
\$165	\$215			
IN-SEASON MIDWEEK Rates Above are Nightly and Apply to 4 Night Stay Only. (Mon.-Thurs.)				

- Rates subject to change.
- Taxes not included.
- VISA/Mastercard accepted.
- Payment is guaranteed till departure date shown on confirmation unless 10 days notice is given.
- One night's rental deposit required with reservation; balance due on arrival. Deposits refunded if cancellation received at least 10 days before arrival. \$25 service charge per unit on all cancellations/changes. No exceptions!

*Off-Season Midweek Specials

Check in Monday, check out Friday. Available May; June; September

**Escape Weekends

Includes two nights lodging. From \$170/weekend. Add-on weekdays are 50% off regular price. Available May; September; October.

Holiday Weekends

Minimum three night stay
Other minimum requirements may apply.

MAY						
Sun	Mon	Tues	Wed	Thurs	Fri	Sat
						1
2	3	4	5	6	7	8
					ESCAPE	
9	10	11	12	13	14	15
	MIDWEEK				ESCAPE	
16	17	18	19	20	21	22
	MIDWEEK				ESCAPE	
23	24	25	26	27	28	29
	MIDWEEK					
30	31					

JUNE						
Sun	Mon	Tues	Wed	Thurs	Fri	Sat
		1	2	3	4	5
	MIDWEEK					
6	7	8	9	10	11	12
	MIDWEEK					
13	14	15	16	17	18	19
20	21	22	23	24	25	26
27	28	29	30			
	MIDWEEK					

JULY						
Sun	Mon	Tues	Wed	Thurs	Fri	Sat
				1	2	3
4	5	6	7	8	9	10
	MIDWEEK					
11	12	13	14	15	16	17
18	19	20	21	22	23	24
25	26	27	28	29	30	31

(All specials subject to availability)

Personal checks accepted for advance reservations only!

AUGUST						
Sun	Mon	Tues	Wed	Thurs	Fri	Sat
1	2	3	4	5	6	7
8	9	10	11	12	13	14
15	16	17	18	19	20	21
22	23	24	25	26	27	28
29	30	31				
	MIDWEEK					

SEPTEMBER						
Sun	Mon	Tues	Wed	Thurs	Fri	Sat
			1	2	3	4
	MIDWEEK					
5	6	7	8	9	10	11
	MIDWEEK					
12	13	14	15	16	17	18
					ESCAPE	
19	20	21	22	23	24	25
					ESCAPE	
26	27	28	29	30		

OCTOBER						
Sun	Mon	Tues	Wed	Thurs	Fri	Sat
					1	2
					ESCAPE	
3	4	5	6	7	8	9
					ESCAPE	
10	11	12	13	14	15	16
					ESCAPE	
17						



RESERVATION CARD

Name _____ adults and _____ children

Address _____

City _____ State _____ Zip _____

Phone (____) _____

For my party of _____

At the rate of \$ _____

Arrive on (date) _____

Depart on (date) _____

Deposit \$ _____

Signature _____

Please reserve:

1st choice _____

2nd choice _____

Please name the type of accommodations desired.

Deposits refunded if cancellation received at least 10 days before arrival date.
\$25 service charge per unit on all cancellations/changes.

The Beachcomber RESORT MOTEL

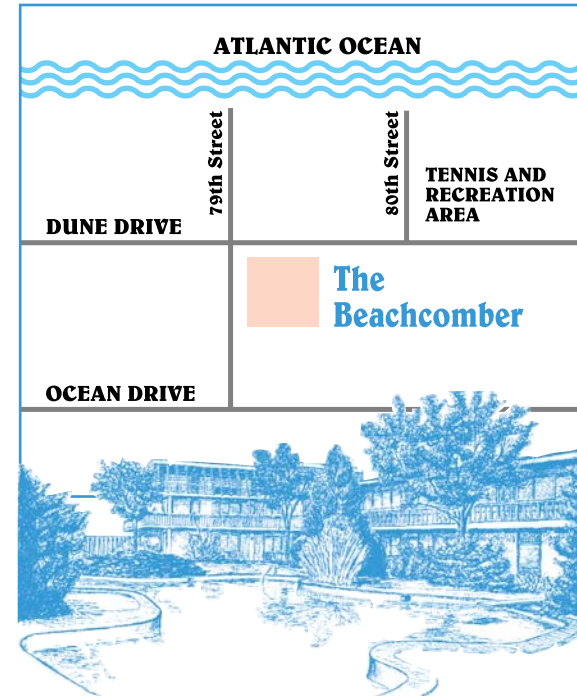
7900 Dune Drive, Avalon, NJ 08202 • (609) 368-5121
Toll Free (800) 462-9703 • Fax (609) 368-3888
www.avalon-beachcomber.com
email: beachcomberresort@comcast.net

2010 The Beachcomber

The suite approach to your seashore vacation.



- 55 beautifully furnished rooms and suites
- All with fully equipped kitchens with microwaves and dishwashers
- Lovely, secluded heated pool and wading pool
- Close to beach, tennis courts and recreation area
- Golf nearby
- Air conditioning/Heat
- Color TV with Cable
- Daily maid and linen service
- Laundry facilities
- Free beach tags
- Free parking
- Wireless Internet



The Best the Jersey Shore Has to Offer!

Beautiful, spacious beaches. Tall dunes. Relaxing, refreshing, unhurried atmosphere. Perfect for family fun. Where Avalon meets Stone Harbor.

From Philadelphia and the West.

Take the Schuylkill Expressway (I-76) to the Atlantic City Expressway (42) onto Garden State Parkway Southbound to Exit 13.

From New York and the North.

Take Garden State Parkway Southbound to Exit 13.

From Washington, D.C. and the South.

Take Cape May-Lewes Ferry onto Garden State Parkway Northbound to Exit 10A.

For information or reservations write or call:

The Beachcomber

7900 DUNE DRIVE,
AVALON, NEW JERSEY 08202
PHONE: (609) 368-5121
TOLL FREE: (800) 462-9703
FAX: (609) 368-3888
www.avalon-beachcomber.com
email: beachcomberresort@comcast.net



B1 - Efficiency **B2** - Efficiency **C** - One Bedroom



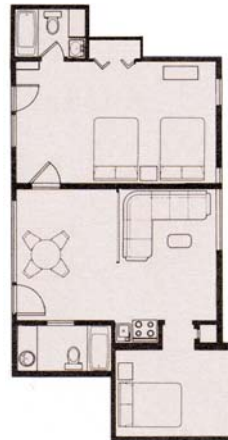
D - One Bedroom



F - Two Bedrooms/
One Bath
Penthouse Suite



G1 - Three Room/
Two Bath
Second Floor -
Overlooking Pool



G2 - Two Bedroom/Two Bath
Second Floor - Overlooking Pool



H2 - Two Bedrooms/Two Bath
Poolside Suite



H1 - Three Room/Two Bath

BEACHCOMBER CONDOMINIUM SALES

The Beachcomber is comprised of 54 individually owned condominiums. The complex is operated as a hotel/condominium.

Occasionally, condominiums come on the market for resale.

For information, contact Mgrs. Penny or Michael;

800-462-9703

609-368-5121

President Mike Buzzzo 203-966-8049